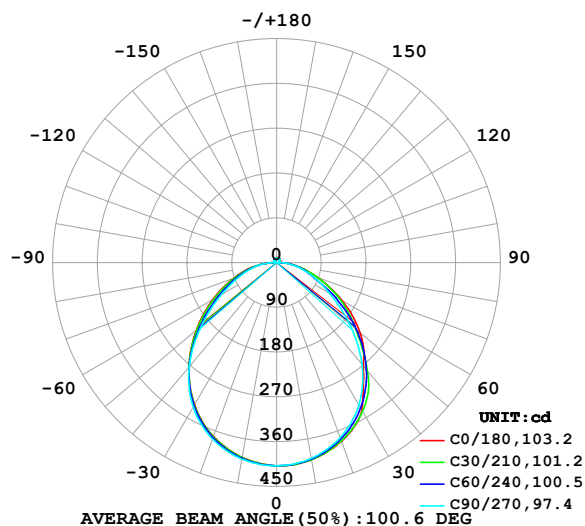


LUMINAIRE PHOTOMETRIC TEST REPORT

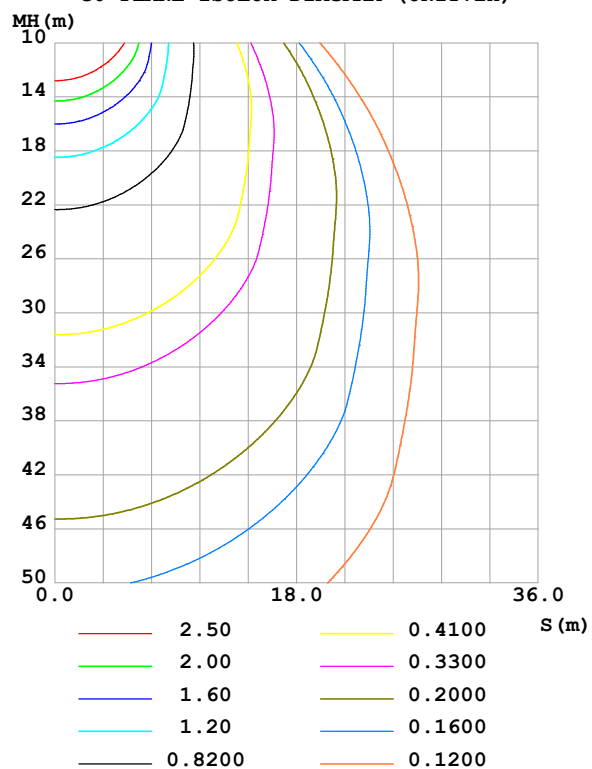
Test:U:24.00V I:0.4218A P:10.12W PF:1.000 Freq:0Hz Lamp Flux:1086.79x1 lm		
NAME: SP01-24V-2835-2835-120-4000K	TYPE:	WEIGHT:
SPEC.:	DIM.: Length=1m	SERIAL No.:
MFR.: OLympia lighting	SUR.:	Shielding Angle:

DATA OF LAMP		PHOTOMETRIC DATA				Eff: 107.36 lm/W
MODEL	2835	Imax (cd)	408.5	S/MH(C0/180)	1.21	
NOMINAL POWER(W)	10	LOR(%)	100.0	S/MH(C90/270)	1.22	
RATED VOLTAGE(V)	24	TOTAL FLUX(lm)	1086.8	η UP,DN(C0-180)	1.8,47.6	
NOMINAL FLUX(lm)	1086.79	CIE CLASS	DIRECT	η UP,DN(C180-360)	1.7,48.8	
LAMPS INSIDE	1	η up (%)	3.6	CIBSE SHR NOM	1.25	
TEST VOLTAGE(V)		η down (%)	96.4	CIBSE SHR MAX	1.35	

LUMINOUS INTENSITY DISTRIBUTION DIAGRAM



C0 PLANE ISOLUX DIAGRAM (UNIT:lx)



C Range: 0 - 360DEG
C Interval: 30.0DEG
Test Speed: HIGH
Temperature:25.3℃
Operators:
Test Date:2025-03-04

γ Range: 0 - 180DEG
 γ Interval: 1.0DEG
Test System:EVERFINE GO-2000B_V1 SYSTEM V2.00.488
Humidity:65.0%
Test Distance:6.360m [K=1.0000]
Remarks:

ZONAL FLUX DIAGRAM

ZONAL FLUX DIAGRAM:

γ	C0	C45	C90	C135	C180	C225	C270	C315	γ	Φ zone	Φ total	%lum, lamp
10	402.3	401.7	399.6	397.6	397.7	398.7	401.0	402.8	0- 10	38.58	38.58	3.55,3.55
20	382.1	379.3	374.2	371.2	371.8	373.3	377.3	381.8	10- 20	110.1	148.6	13.7,13.7
30	342.6	341.6	330.7	328.4	330.1	331.5	335.4	345.5	20- 30	165.0	313.7	28.9,28.9
40	271.6	282.4	267.3	269.7	274.2	273.6	273.5	292.6	30- 40	192.6	506.2	46.6,46.6
50	218.8	208.7	191.2	201.1	210.4	205.4	197.4	224.8	40- 50	187.4	693.7	63.8,63.8
60	151.2	139.3	123.0	135.7	147.3	139.6	128.1	152.5	50- 60	155.2	848.9	78.1,78.1
70	87.66	79.93	73.85	82.96	92.16	85.87	77.50	89.17	60- 70	109.6	958.5	88.2,88.2
80	40.21	39.76	37.38	41.20	45.79	43.12	40.21	43.49	70- 80	65.51	1024	94.2,94.2
90	4.708	4.408	3.801	4.777	7.167	5.913	4.526	4.623	80- 90	23.94	1048	96.4,96.4
100	4.822	4.611	4.584	4.739	5.580	4.983	4.329	4.086	90-100	4.881	1053	96.9,96.9
110	5.886	5.481	5.370	5.503	6.100	5.394	5.085	4.773	100-110	5.332	1058	97.4,97.4
120	6.861	6.359	6.104	6.169	6.670	5.898	5.644	5.439	110-120	5.696	1064	97.9,97.9
130	7.462	7.148	6.772	6.893	6.194	6.269	6.198	6.025	120-130	5.692	1070	98.4,98.4
140	8.084	7.705	7.364	7.534	6.480	7.003	6.721	6.551	130-140	5.330	1075	98.9,98.9
150	8.777	8.272	7.957	8.116	7.199	7.825	7.273	7.126	140-150	4.701	1080	99.3,99.3
160	9.473	8.928	8.604	8.693	8.320	8.772	8.291	7.910	150-160	3.791	1083	99.7,99.7
170	9.994	9.532	9.133	9.101	9.957	9.478	8.930	8.663	160-170	2.535	1086	99.9,99.9
180	10.29	9.821	9.360	9.205	10.30	9.838	9.326	9.203	170-180	0.9009	1087	100,100
DEG	LUMINOUS INTENSITY:cd									UNIT:lm		

Conical surface Flux(90deg): 602.5 lm

%lum = 55.4%

%lamp = 55.4%

Conical surface Flux(130deg): 909.6 lm

%lum = 83.7%

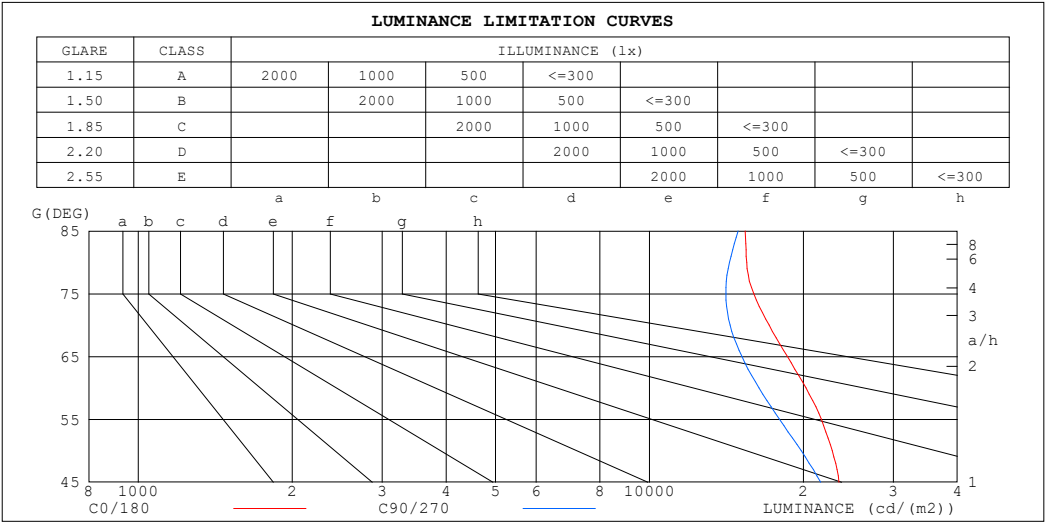
%lamp = 83.7%

C Range: 0 - 360DEG
 C Interval: 30.0DEG
 Test Speed: HIGH
 Temperature:25.3℃
 Operators:
 Test Date:2025-03-04

γ Range: 0 - 180DEG
 γ Interval: 1.0DEG
 Test System:EVERFINE GO-2000B_V1 SYSTEM V2.00.488
 Humidity:65.0%
 Test Distance:6.360m [K=1.0000]
 Remarks:

LUMINANCE LIMITATION CURVES

Test:U:24.00V I:0.4218A P:10.12W PF:1.000 Freq:0Hz Lamp Flux:1086.79x1 lm		
NAME: SP01-24V-2835-2835-120-4000K	TYPE:	WEIGHT:
SPEC.:	DIM.: Length=1m	SERIAL No.:
MFR.: OLympia lighting	SUR.:	Shielding Angle:



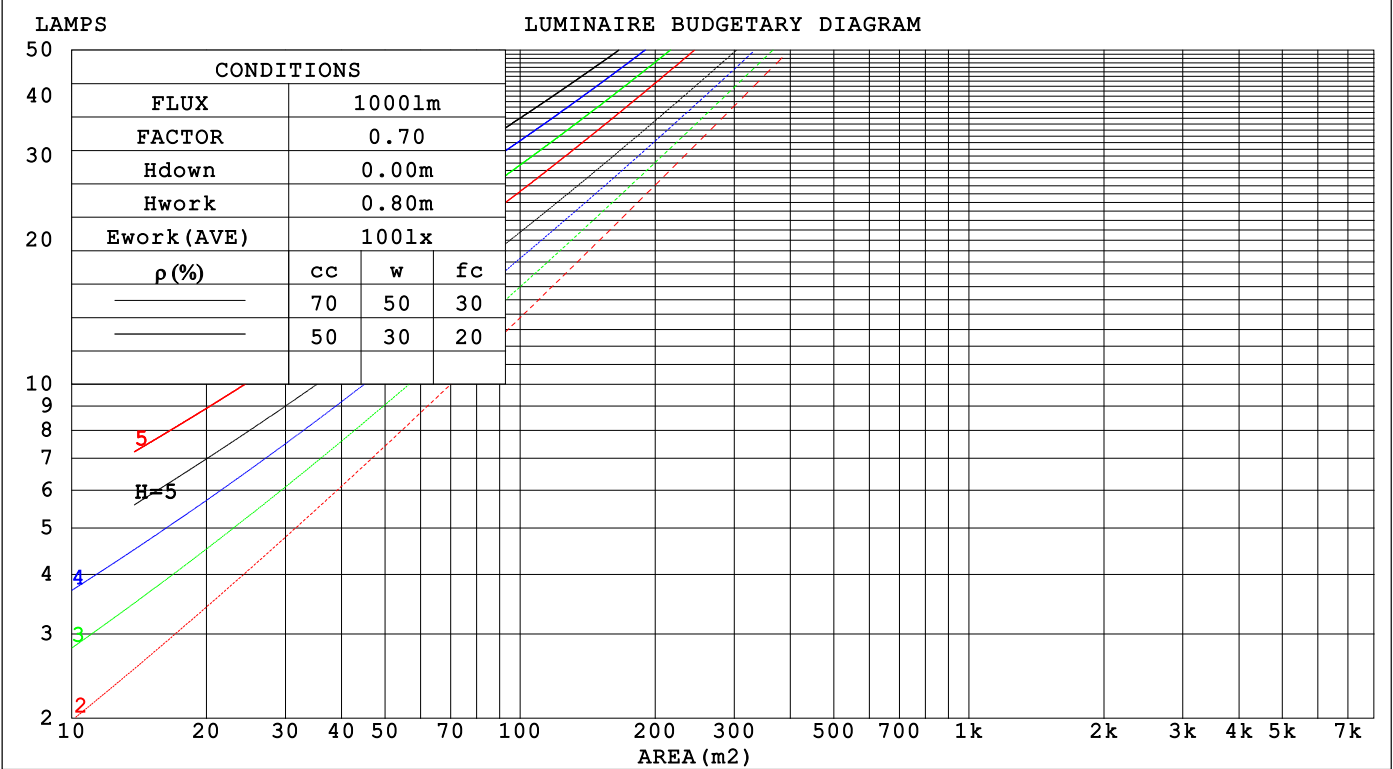
LUMINANCE cd/(m2)		
G (DEG)	C0/180	C90/270
85	15399	14911
80	15491	14332
75	15989	14104
70	17147	14375
65	18622	15158
60	20228	16372
55	21688	17960
50	22770	19802
45	23479	21620

C Range: 0 - 360DEG	γ Range: 0 - 180DEG
C Interval: 30.0DEG	γ Interval: 1.0DEG
Test Speed: HIGH	Test System:EVERFINE GO-2000B_V1 SYSTEM V2.00.488
Temperature:25.3℃	Humidity:65.0%
Operators:	Test Distance:6.360m [K=1.0000]
Test Date:2025-03-04	Remarks:

CU AND LUMINAIRE BUDGETARY ESTIMATE DIAGRAM

Test:U:24.00V I:0.4218A P:10.12W PF:1.000 Freq:0Hz		
Lamp Flux:1086.79x1 lm		
NAME: SP01-24V-2835-2835-120-4000K	TYPE:	WEIGHT:
SPEC.:	DIM.: Length=1m	SERIAL No.:
MFR.: OLYMPIA lighting	SUR.:	Shielding Angle:

pcc	80%			70%			50%			30%			10%			0
pw	50%	30%	10%	50%	30%	10%	50%	30%	10%	50%	30%	10%	50%	30%	10%	0
pfc	20%			20%			20%			20%			20%			0
RCR	RCR:Room Cavity Ratio			Coefficients of Utilization(CU)												
0.0	1.18	1.18	1.18	1.15	1.15	1.15	1.09	1.09	1.09	1.04	1.04	1.04	.99	.99	.99	.96
1.0	1.03	.99	.96	1.01	.97	.94	.96	.93	.90	.91	.89	.87	.87	.85	.83	.81
2.0	.91	.84	.78	.88	.82	.77	.84	.79	.75	.81	.76	.73	.77	.74	.71	.68
3.0	.80	.72	.66	.78	.71	.65	.75	.68	.63	.71	.66	.62	.69	.64	.60	.58
4.0	.71	.63	.56	.70	.62	.56	.67	.60	.54	.64	.58	.53	.61	.56	.52	.50
5.0	.64	.55	.49	.62	.54	.48	.60	.53	.47	.58	.51	.47	.55	.50	.46	.44
6.0	.58	.49	.43	.56	.48	.42	.54	.47	.42	.52	.46	.41	.50	.45	.40	.38
7.0	.52	.44	.38	.51	.43	.38	.50	.42	.37	.48	.41	.37	.46	.40	.36	.34
8.0	.48	.40	.34	.47	.39	.34	.45	.38	.33	.44	.37	.33	.43	.37	.32	.30
9.0	.44	.36	.31	.43	.36	.30	.42	.35	.30	.41	.34	.30	.39	.34	.29	.28
10.0	.41	.33	.28	.40	.33	.28	.39	.32	.27	.38	.31	.27	.37	.31	.27	.25



C Range: 0 - 360DEG
C Interval: 30.0DEG
Test Speed: HIGH
Temperature:25.3℃
Operators:
Test Date:2025-03-04

γ Range: 0 - 180DEG
γ Interval: 1.0DEG
Test System:EVERFINE GO-2000B_V1 SYSTEM V2.00.488
Humidity:65.0%
Test Distance:6.360m [K=1.0000]
Remarks:

WEC AND CCEC

Test:U:24.00V I:0.4218A P:10.12W PF:1.000 Freq:0Hz Lamp Flux:1086.79x1 lm		
NAME: SP01-24V-2835-2835-120-4000K	TYPE:	WEIGHT:
SPEC.:	DIM.: Length=1m	SERIAL No.:
MFR.: OLympia lighting	SUR.:	Shielding Angle:

pcc	80%			70%			50%			30%			10%			0														
pw	50%	30%	10%	50%	30%	10%	50%	30%	10%	50%	30%	10%	50%	30%	10%	0														
pfc	20%			20%			20%			20%			20%			0														
RCR	RCR:Room Cavity Ratio															Wall Exitance Coefficients(WEC)														
0.0																														
1.0	.301	.171	.054	.293	.167	.053	.278	.159	.051	.264	.152	.049	.251	.145	.047															
2.0	.281	.154	.047	.274	.151	.047	.261	.145	.045	.248	.139	.044	.237	.134	.042															
3.0	.260	.139	.041	.254	.136	.041	.242	.131	.040	.231	.126	.039	.221	.122	.038															
4.0	.241	.125	.037	.235	.123	.036	.224	.119	.036	.214	.115	.035	.205	.111	.034															
5.0	.223	.114	.033	.218	.112	.033	.208	.108	.032	.199	.105	.031	.191	.102	.031															
6.0	.207	.104	.030	.203	.102	.029	.194	.099	.029	.186	.097	.028	.178	.094	.028															
7.0	.193	.095	.027	.189	.094	.027	.181	.092	.026	.174	.089	.026	.167	.087	.026															
8.0	.181	.088	.025	.177	.087	.025	.170	.085	.024	.164	.083	.024	.157	.081	.024															
9.0	.170	.082	.023	.166	.081	.023	.160	.079	.022	.154	.077	.022	.148	.075	.022															
10.0	.160	.077	.021	.157	.076	.021	.151	.074	.021	.146	.072	.021	.140	.071	.020															

pcc	80%			70%			50%			30%			10%			0
pw	50%	30%	10%	50%	30%	10%	50%	30%	10%	50%	30%	10%	50%	30%	10%	0
pfc	20%			20%			20%			20%			20%			0
RCR	RCR:Room Cavity Ratio						Ceiling Cavity Exitance Coefficients (CCEC)									
0.0	.218	.218	.218	.186	.186	.186	.127	.127	.127	.073	.073	.073	.023	.023	.023	
1.0	.207	.184	.163	.177	.158	.140	.121	.108	.097	.070	.063	.056	.022	.020	.018	
2.0	.199	.160	.127	.170	.137	.110	.117	.095	.077	.067	.055	.045	.022	.018	.015	
3.0	.190	.142	.103	.163	.123	.090	.112	.085	.063	.065	.050	.037	.021	.016	.012	
4.0	.183	.129	.088	.157	.111	.076	.108	.078	.054	.062	.045	.032	.020	.015	.010	
5.0	.175	.118	.076	.150	.102	.066	.104	.072	.047	.060	.042	.028	.019	.014	.009	
6.0	.168	.110	.068	.145	.095	.059	.100	.067	.042	.058	.039	.025	.019	.013	.008	
7.0	.161	.103	.062	.139	.089	.054	.096	.063	.038	.056	.037	.023	.018	.012	.008	
8.0	.155	.097	.058	.134	.084	.050	.092	.059	.036	.054	.035	.021	.017	.011	.007	
9.0	.149	.092	.054	.129	.080	.047	.089	.056	.033	.052	.033	.020	.017	.011	.007	
10.0	.144	.088	.051	.124	.077	.045	.086	.054	.032	.050	.032	.019	.016	.010	.006	

C Range: 0 - 360DEG
C Interval: 30.0DEG
Test Speed: HIGH
Temperature:25.3℃
Operators:
Test Date:2025-03-04

γ Range: 0 - 180DEG
γ Interval: 1.0DEG
Test System:EVERFINE GO-2000B_V1 SYSTEM V2.00.488
Humidity:65.0%
Test Distance:6.360m [K=1.0000]
Remarks:

UGR(Unified Glare Rating) Table

Test:U:24.00V I:0.4218A P:10.12W PF:1.000 Freq:0Hz Lamp Flux:1086.79x1 lm										
NAME: SP01-24V-2835-2835-120-4000K					TYPE:			WEIGHT:		
SPEC.:					DIM.: Length=1m			SERIAL No.:		
MFR.: OLympia lighting					SUR.:			Shielding Angle:		
ceiling/cavity	0.7	0.7	0.5	0.5	0.3	0.7	0.7	0.5	0.5	0.3
walls	0.5	0.3	0.5	0.3	0.3	0.5	0.3	0.5	0.3	0.3
working plane	0.2	0.2	0.2	0.2	0.2	0.2	0.2	0.2	0.2	0.2
Room dimensions	Viewed crosswise					Viewed endwise				
x = 2H y = 2H	22.2	23.6	22.5	23.9	24.2	21.5	22.9	21.8	23.2	23.5
3H	23.5	24.8	23.8	25.1	25.4	22.6	23.9	23.0	24.2	24.5
4H	24.0	25.3	24.4	25.6	25.9	23.1	24.4	23.5	24.7	25.0
6H	24.5	25.6	24.8	26.0	26.3	23.6	24.8	24.0	25.1	25.5
8H	24.6	25.8	25.0	26.1	26.5	23.8	24.9	24.2	25.3	25.7
12H	24.8	25.8	25.2	26.2	26.6	24.0	25.1	24.4	25.4	25.8
4H 2H	22.6	23.9	23.0	24.2	24.5	22.0	23.3	22.4	23.6	23.9
3H	24.1	25.2	24.5	25.6	26.0	23.3	24.4	23.7	24.8	25.2
4H	24.8	25.8	25.2	26.2	26.6	24.0	25.0	24.4	25.4	25.8
6H	25.4	26.3	25.9	26.7	27.1	24.6	25.5	25.1	25.9	26.4
8H	25.6	26.5	26.1	26.9	27.3	24.9	25.7	25.4	26.2	26.6
12H	25.8	26.6	26.3	27.0	27.5	25.1	25.9	25.6	26.3	26.8
8H 4H	25.0	25.8	25.5	26.3	26.7	24.3	25.1	24.8	25.6	26.0
6H	25.8	26.5	26.3	26.9	27.4	25.1	25.8	25.6	26.3	26.8
8H	26.1	26.7	26.6	27.2	27.7	25.5	26.1	26.0	26.6	27.1
12H	26.4	26.9	27.0	27.4	28.0	25.8	26.4	26.4	26.9	27.4
12H 4H	25.0	25.8	25.5	26.2	26.7	24.3	25.1	24.8	25.5	26.0
6H	25.8	26.5	26.4	26.9	27.5	25.2	25.8	25.7	26.3	26.8
8H	26.2	26.8	26.8	27.3	27.8	25.7	26.2	26.2	26.7	27.2
Variations with the observer position at spacings(CIE Pub.117):										
S = 1.0H	+ 0.2 / - 0.2					+ 0.2 / - 0.3				
1.5H	+ 0.1 / - 0.3					+ 0.2 / - 0.3				
2.0H	+ 0.2 / - 0.3					+ 0.3 / - 0.4				

CIE Pub.117, 1087 lm Total Lamp Luminous Flux Correct (8log(F/F0) = 0.3)
Area: 0.015 m2

C Range: 0 - 360DEG
C Interval: 30.0DEG
Test Speed: HIGH
Temperature:25.3℃
Operators:
Test Date:2025-03-04

γ Range: 0 - 180DEG
γ Interval: 1.0DEG
Test System:EVERFINE GO-2000B_V1 SYSTEM V2.00.488
Humidity:65.0%
Test Distance:6.360m [K=1.0000]
Remarks:

UTILIZATION FACTORS TABLE

Test:U:24.00V I:0.4218A P:10.12W PF:1.000 Freq:0Hz Lamp Flux:1086.79x1 lm		
NAME: SP01-24V-2835-2835-120-4000K	TYPE:	WEIGHT:
SPEC.:	DIM.: Length=1m	SERIAL No.:
MFR.: OLympia lighting	SUR.:	Shielding Angle:

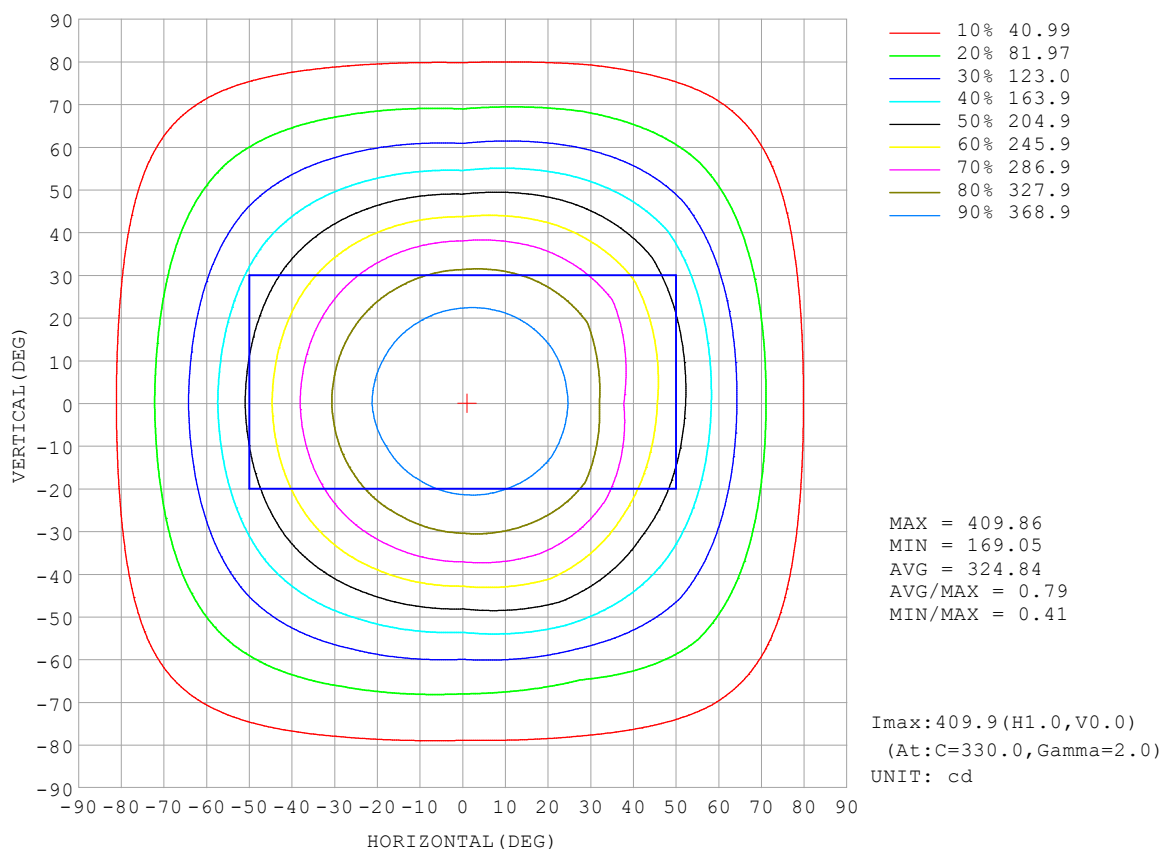
REFLECTANCE										
Ceiling	0.8	0.8	0.8	0.7	0.7	0.7	0.5	0.5	0.5	0
Walls	0.7	0.5	0.3	0.7	0.5	0.3	0.7	0.5	0.3	0
Working plane	0.2	0.2	0.2	0.2	0.2	0.2	0.2	0.2	0.2	0
ROOM INDEX	UTILIZATION FACTORS (PERCENT) $k(RI) \times RCR = 5$									
$k = 0.60$	59	47	41	58	47	40	56	46	40	34
0.80	68	57	50	67	57	50	65	56	49	43
1.00	77	66	59	75	65	58	73	66	58	51
1.25	84	73	66	82	73	66	79	71	65	57
1.50	88	79	72	86	78	71	83	76	70	62
2.00	95	87	80	93	85	79	89	83	77	69
2.50	99	91	85	96	89	84	92	86	82	73
3.00	102	95	90	99	93	88	95	90	86	77
4.00	106	100	95	103	98	94	98	94	91	81
5.00	108	103	99	105	101	97	100	97	94	83
ROOM INDEX	UF (total)									Direct
According to DIN EN 13032-2 2004			Suspended					SHRNOM = 1.25		

C Range: 0 - 360DEG
 C Interval: 30.0DEG
 Test Speed: HIGH
 Temperature: 25.3°C
 Operators:
 Test Date: 2025-03-04

γ Range: 0 - 180DEG
 γ Interval: 1.0DEG
 Test System: EVERFINE GO-2000B_V1 SYSTEM V2.00.488
 Humidity: 65.0%
 Test Distance: 6.360m [K=1.0000]
 Remarks:

ISOCANDELA DIAGRAM

Test:U:24.00V I:0.4218A P:10.12W PF:1.000 Freq:0Hz Lamp Flux:1086.79x1 lm		
NAME: SP01-24V-2835-2835-120-4000K	TYPE:	WEIGHT:
SPEC.:	DIM.: Length=1m	SERIAL No.:
MFR.: OLympia lighting	SUR.:	Shielding Angle:

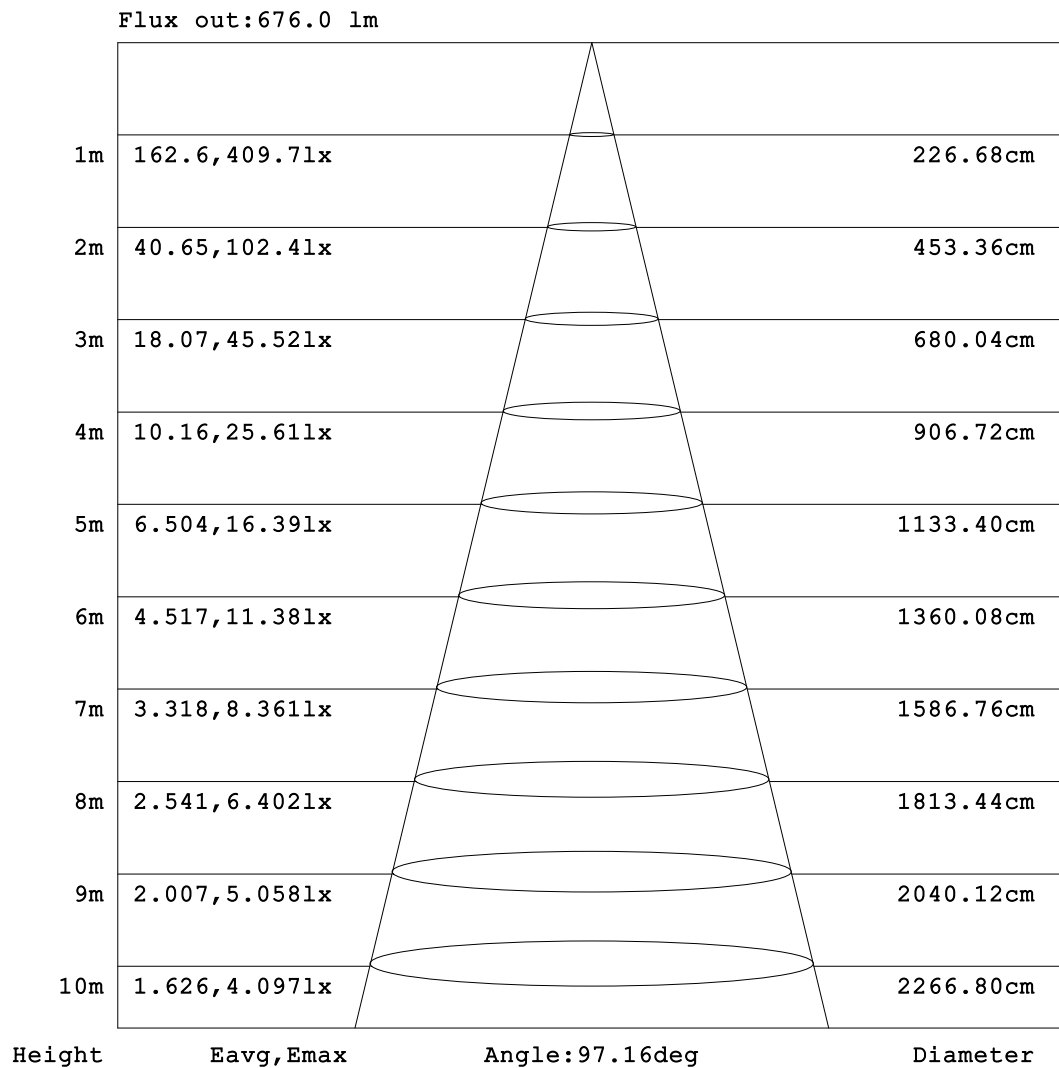


C Range: 0 - 360DEG
C Interval: 30.0DEG
Test Speed: HIGH
Temperature: 25.3°C
Operators:
Test Date: 2025-03-04

γ Range: 0 - 180DEG
γ Interval: 1.0DEG
Test System: EVERFINE GO-2000B_V1 SYSTEM V2.00.488
Humidity: 65.0%
Test Distance: 6.360m [K=1.0000]
Remarks:

AAI Figure

Test:U:24.00V I:0.4218A P:10.12W PF:1.000 Freq:0Hz Lamp Flux:1086.79x1 lm		
NAME: SP01-24V-2835-2835-120-4000K	TYPE:	WEIGHT:
SPEC.:	DIM.: Length=1m	SERIAL No.:
MFR.: OLympia lighting	SUR.:	Shielding Angle:



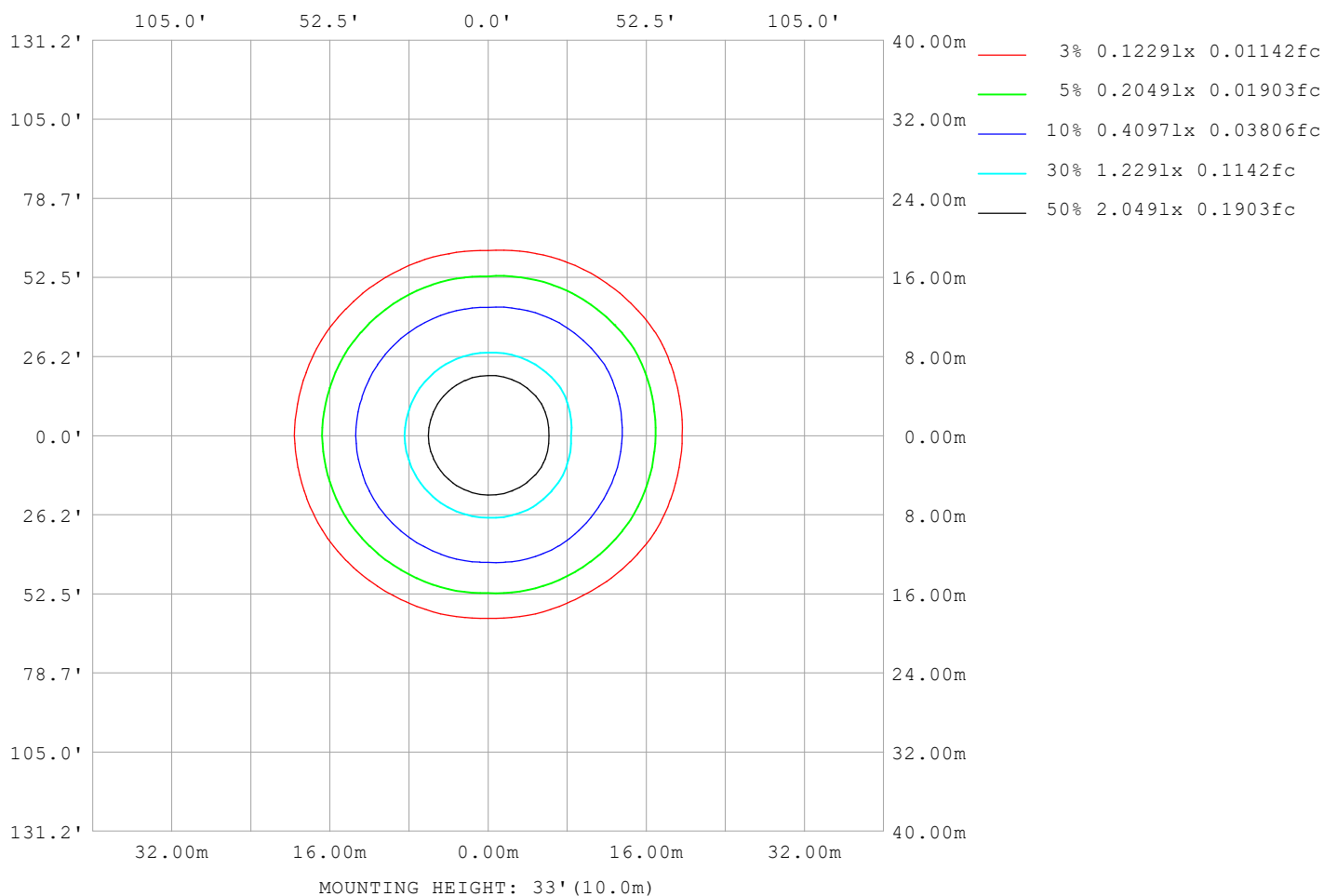
Note: The Curves indicate the illuminated area and the average illumination when the luminaire is at different distance.

C Range: 0 - 360DEG
C Interval: 30.0DEG
Test Speed: HIGH
Temperature: 25.3℃
Operators:
Test Date: 2025-03-04

γ Range: 0 - 180DEG
γ Interval: 1.0DEG
Test System: EVERFINE GO-2000B_V1 SYSTEM V2.00.488
Humidity: 65.0%
Test Distance: 6.360m [K=1.0000]
Remarks:

ISOLUX DIAGRAM

Test:U:24.00V I:0.4218A P:10.12W PF:1.000 Freq:0Hz Lamp Flux:1086.79x1 lm		
NAME: SP01-24V-2835-2835-120-4000K	TYPE:	WEIGHT:
SPEC.:	DIM.: Length=1m	SERIAL No.:
MFR.: OLympia lighting	SUR.:	Shielding Angle:



C Range: 0 - 360DEG
C Interval: 30.0DEG
Test Speed: HIGH
Temperature: 25.3°C
Operators:
Test Date: 2025-03-04

γ Range: 0 - 180DEG
γ Interval: 1.0DEG
Test System: EVERFINE GO-2000B_V1 SYSTEM V2.00.488
Humidity: 65.0%
Test Distance: 6.360m [K=1.0000]
Remarks:

LED Avg.L Report

Test:U:24.00V I:0.4218A P:10.12W PF:1.000 Freq:0Hz Lamp Flux:1086.79x1 lm		
NAME: SP01-24V-2835-2835-120-4000K	TYPE:	WEIGHT:
SPEC.:	DIM.: Length=1m	SERIAL No.:
MFR.: OLympia lighting	SUR.:	Shielding Angle:

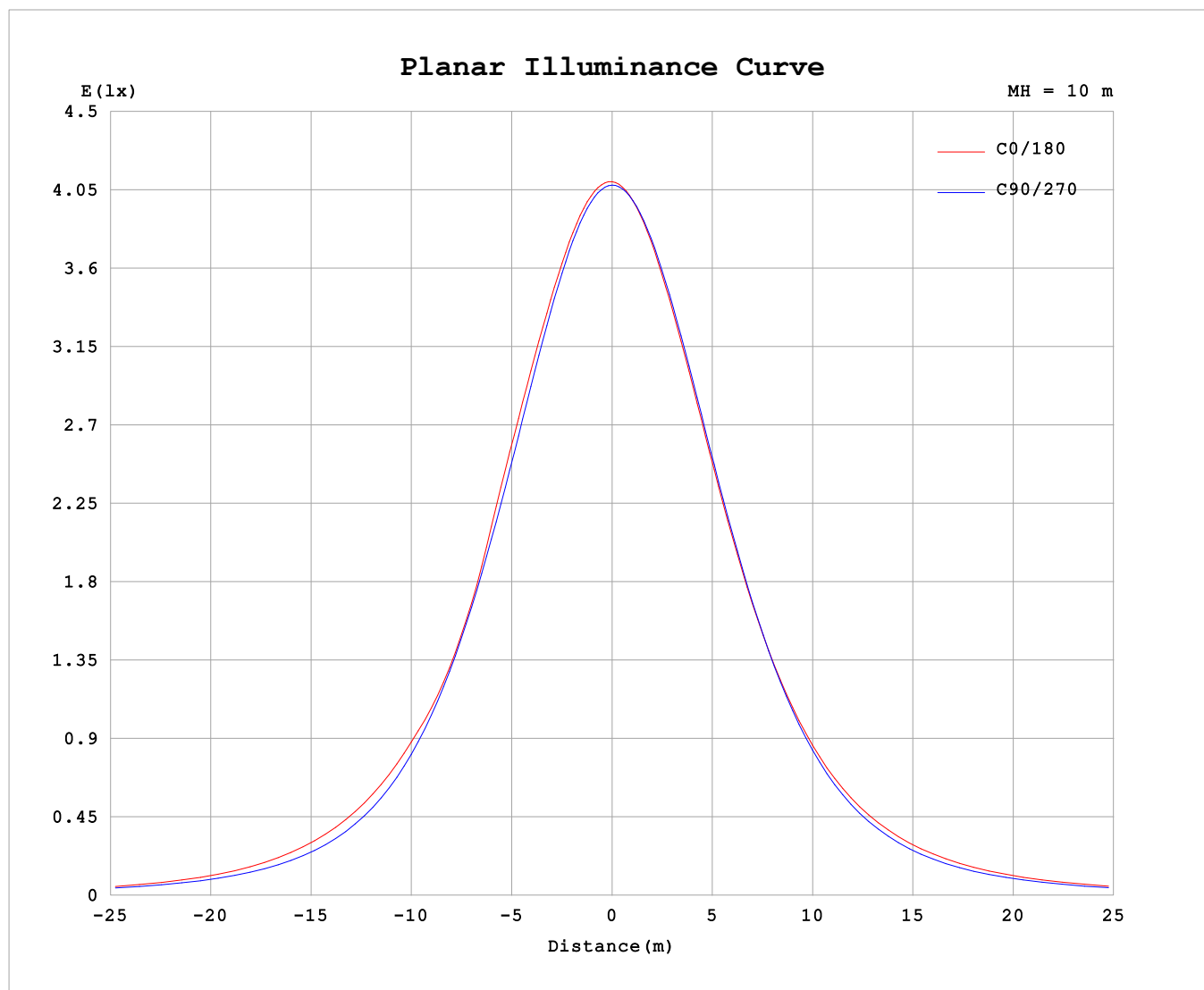
AvgL	cd/m2
L_0~180 (65) av	18608
L_0~180 (75) av	16762
L_0~180 (85) av	16871
L_90~270 (65) av	15516
L_90~270 (75) av	14516
L_90~270 (85) av	16007
L_45 (65) av	17555
L_45 (75) av	16104
L_45 (85) av	16830

Standard: GB/T 29293-2012

C Range: 0 - 360DEG
C Interval: 30.0DEG
Test Speed: HIGH
Temperature:25.3℃
Operators:
Test Date:2025-03-04

γ Range: 0 - 180DEG
γ Interval: 1.0DEG
Test System:EVERFINE GO-2000B_V1 SYSTEM V2.00.488
Humidity:65.0%
Test Distance:6.360m [K=1.0000]
Remarks:

Planar Illuminance Curve



C Range: 0 - 360DEG
C Interval: 30.0DEG
Test Speed: HIGH
Temperature: 25.3°C
Operators:
Test Date: 2025-03-04

γ Range: 0 - 180DEG
 γ Interval: 1.0DEG
Test System: EVERFINE GO-2000B_V1 SYSTEM V2.00.488
Humidity: 65.0%
Test Distance: 6.360m [K=1.0000]
Remarks:

LUMINOUS DISTRIBUTION INTENSITY DATA

Test:U:24.00V I:0.4218A P:10.12W PF:1.000 Freq:0Hz Lamp Flux:1086.79x1 lm		
NAME: SP01-24V-2835-2835-120-4000K	TYPE:	WEIGHT:
SPEC.:	DIM.: Length=1m	SERIAL No.:
MFR.: OLYMPIA lighting	SUR.:	Shielding Angle:

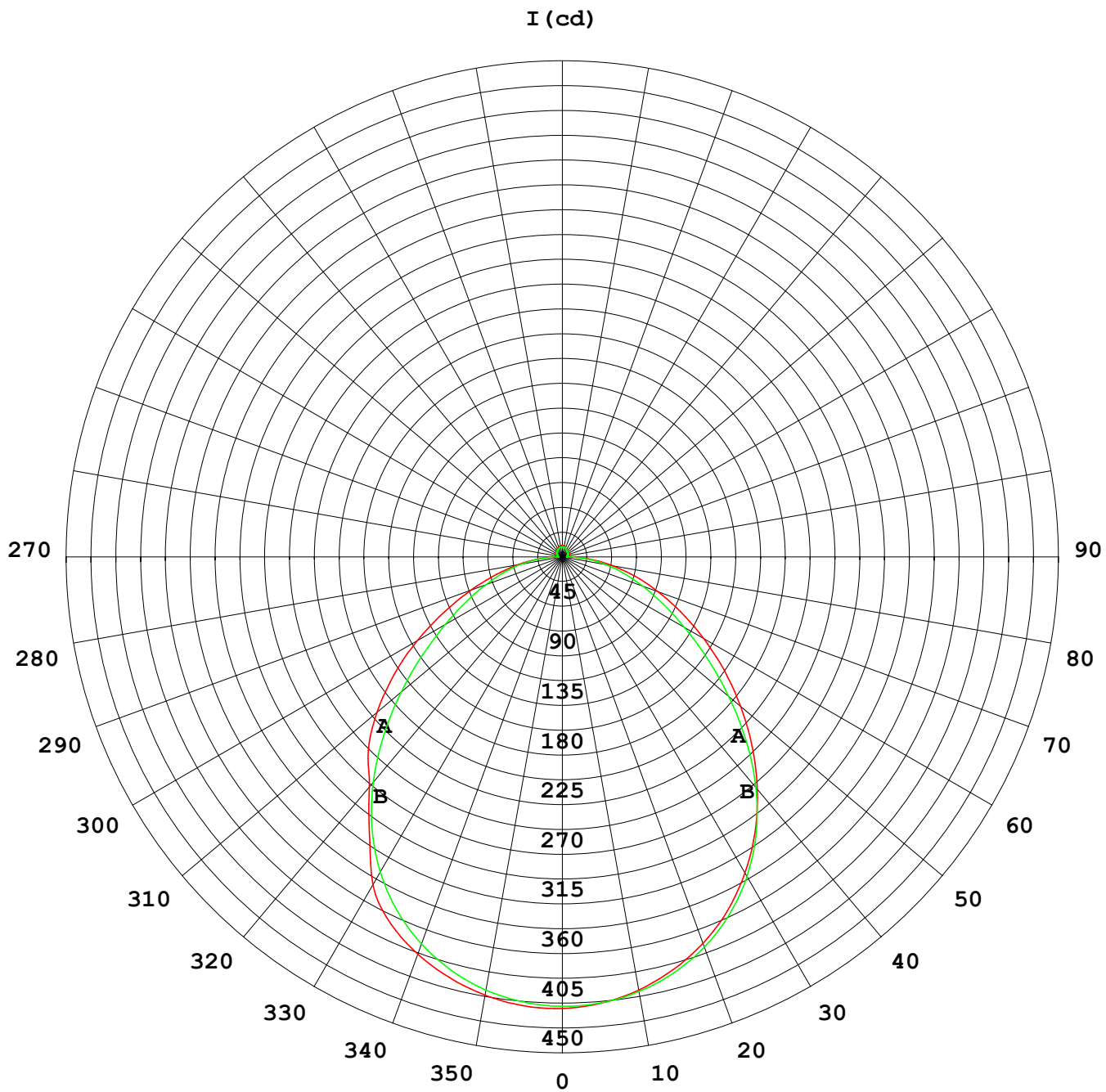
Table--1

UNIT: cd

C (DEG) γ (DEG)	0	30	60	90	120	150	180	210	240	270	300	330							
0	408	408	408	408	408	408	408	408	408	408	408	408							
5	407	407	407	406	405	405	405	405	406	407	407	408							
10	402	402	401	400	398	397	398	398	399	401	403	403							
15	394	393	391	389	387	386	386	387	389	391	394	395							
20	382	381	378	374	371	371	372	372	374	377	381	383							
25	366	365	360	355	352	352	353	354	355	359	364	367							
30	343	346	338	331	328	329	330	331	332	335	343	348							
35	304	321	311	301	300	302	304	304	305	307	317	325							
40	272	284	281	267	268	272	274	274	273	273	288	298							
45	248	243	247	230	232	239	243	242	239	236	254	266							
50	219	208	210	191	196	206	210	209	202	197	218	232							
55	186	177	171	155	161	173	179	176	167	161	181	196							
60	151	146	132	123	130	142	147	144	135	128	145	160							
65	118	116	96.2	96.2	102	113	118	115	107	101	114	124							
70	87.7	87.2	72.7	73.8	78.9	87.1	92.2	89.3	82.5	77.5	87.0	91.3							
75	61.9	62.3	57.0	54.8	58.3	64.3	68.3	66.0	61.2	57.9	64.1	65.3							
80	40.2	40.9	38.6	37.4	39.5	42.9	45.8	44.3	41.9	40.2	43.7	43.3							
85	20.1	20.8	20.7	19.5	20.4	21.7	24.1	22.9	22.4	22.3	23.9	22.7							
90	4.71	4.59	4.23	3.80	4.30	5.26	7.17	6.38	5.45	4.53	4.55	4.69							
95	4.35	4.27	4.15	4.19	4.27	4.47	5.47	5.11	4.73	4.16	3.95	3.64							
100	4.82	4.69	4.53	4.58	4.67	4.81	5.58	5.13	4.84	4.33	4.22	3.95							
105	5.35	5.14	4.94	4.98	5.08	5.20	5.82	5.38	5.15	4.68	4.58	4.28							
110	5.89	5.60	5.36	5.37	5.47	5.54	6.10	5.67	5.11	5.09	4.92	4.62							
115	6.42	6.08	5.76	5.74	5.85	5.80	6.37	5.98	5.34	5.33	5.28	4.97							
120	6.86	6.56	6.16	6.10	6.20	6.13	6.67	6.10	5.69	5.64	5.57	5.31							
125	7.16	6.99	6.55	6.45	6.55	6.52	6.69	5.85	6.11	5.92	5.77	5.65							
130	7.46	7.39	6.90	6.77	6.85	6.94	6.19	5.98	6.56	6.20	6.05	6.00							
135	7.76	7.65	7.22	7.07	7.16	7.30	6.14	6.32	6.96	6.46	6.35	6.25							
140	8.08	7.91	7.50	7.36	7.44	7.62	6.48	6.68	7.33	6.72	6.62	6.48							
145	8.42	8.18	7.79	7.66	7.74	7.91	6.83	7.08	7.67	6.97	6.90	6.75							
150	8.78	8.46	8.08	7.96	8.04	8.20	7.20	7.64	8.01	7.27	7.19	7.07							
155	9.13	8.77	8.41	8.27	8.33	8.49	7.66	8.30	8.35	7.89	7.55	7.41							
160	9.47	9.11	8.75	8.60	8.62	8.76	8.32	8.85	8.70	8.29	8.06	7.75							
165	9.79	9.41	9.06	8.90	8.86	8.99	9.38	9.29	9.05	8.63	8.44	8.10							
170	9.99	9.74	9.33	9.13	9.06	9.14	9.96	9.61	9.34	8.93	8.76	8.57							
175	10.2	9.92	9.54	9.30	9.18	9.22	10.2	9.84	9.58	9.16	9.03	8.97							
180	10.3	10.0	9.64	9.36	9.21	9.20	10.3	9.97	9.71	9.33	9.21	9.19							

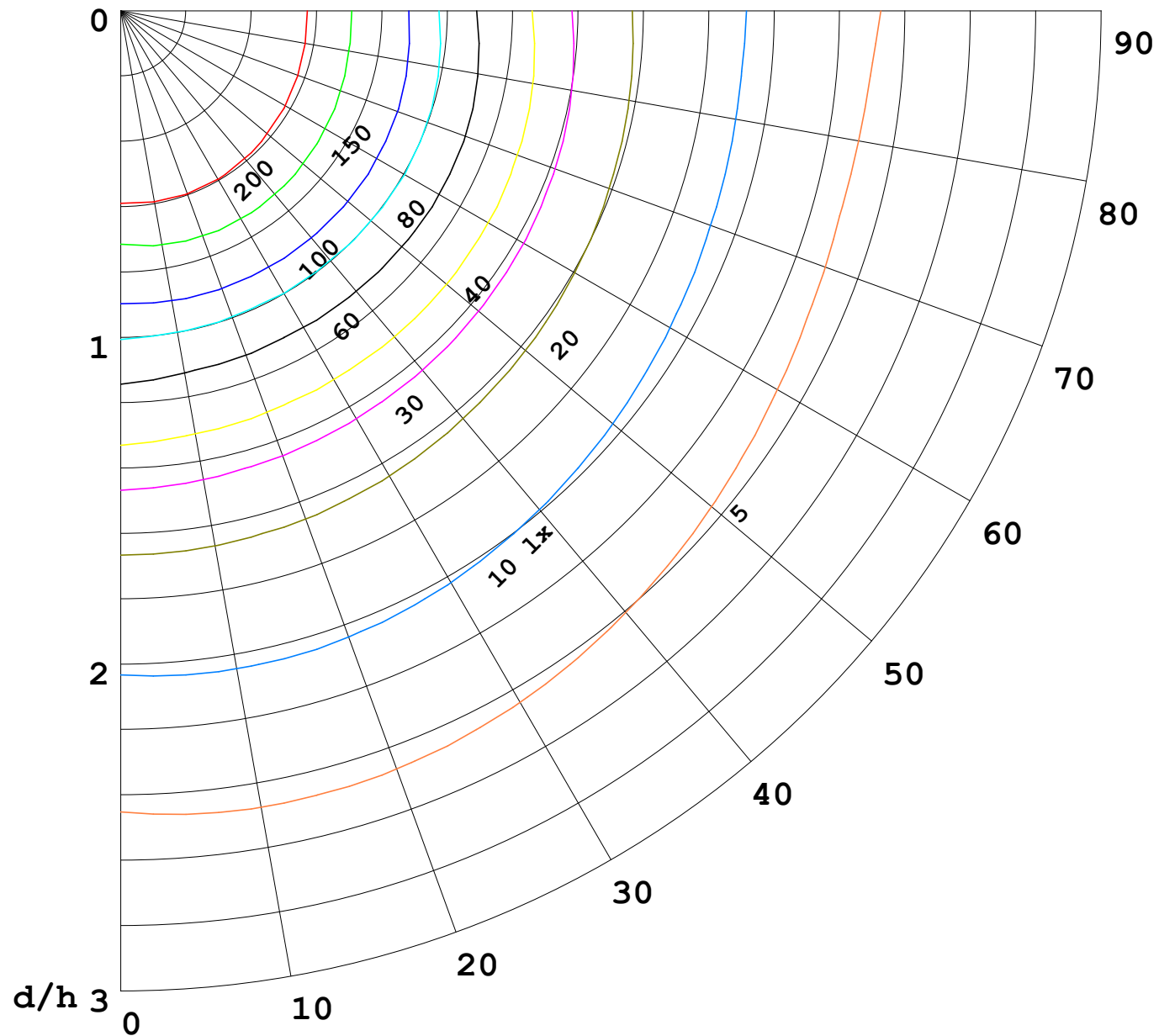
C Range: 0 - 360DEG
C Interval: 30.0DEG
Test Speed: HIGH
Temperature:25.3℃
Operators:
Test Date:2025-03-04

γ Range: 0 - 180DEG
γ Interval: 1.0DEG
Test System:EVERFINE GO-2000B_V1 SYSTEM V2.00.488
Humidity:65.0%
Test Distance:6.360m [K=1.0000]
Remarks:



1000 lm

$\kappa = 1$



F = 1000 lm
 K = 0.7
 Hcc = 0.8 m
 Hfc = 0.0 m
 Eave = 100 lx

	Pcc	Pw	Pfc
—————	70	50	30
—————	50	30	20

